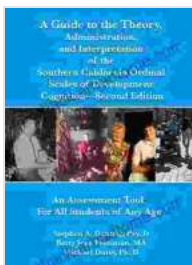


# Guide to the Theory, Administration, and Interpretation of the Southern: An In-Depth Exploration for Professionals

## : Unveiling the Southern Examination

The Southern Examination, a renowned psychological assessment tool, has gained widespread recognition in various fields, including clinical practice, human resources, and forensic settings. Its comprehensive approach to personality assessment provides invaluable insights into individuals' thoughts, feelings, and behaviors. The "Guide to the Theory, Administration, and Interpretation of the Southern" serves as an indispensable resource for professionals seeking to harness the full potential of this powerful instrument.



## A Guide to the Theory, Administration and Interpretation of the Southern California Scales of Development Scales of Cognition Second Edition

★★★★★ 5 out of 5

Language : English  
File size : 26074 KB  
Text-to-Speech : Enabled  
Screen Reader : Supported  
Enhanced typesetting : Enabled  
Word Wise : Enabled  
Print length : 148 pages





### **Theoretical Foundations: Delving into the Southern's Principles**

The Southern Examination is rooted in a solid theoretical framework that draws upon psychodynamic, trait, and behavioral approaches to personality assessment. The guide thoroughly explores these theoretical underpinnings, enabling readers to grasp the complexities of the Southern's multifaceted perspective on human psychology.

### **Administration and Scoring: Ensuring Accurate and Reliable Results**

Proper administration and scoring of the Southern Examination are crucial for obtaining valid and reliable results. The guide provides detailed instructions on the administration process, including test materials, time limits, and potential pitfalls to avoid. Moreover, it delves into the scoring system, explaining the intricate calculations and statistical procedures involved in interpreting the test results.

### **Interpretation: Unraveling the Secrets of the Southern Profile**

The interpretation section of the guide serves as a roadmap for clinicians and other professionals to navigate the Southern profile effectively. It offers a comprehensive review of the test's various scales and indices, exploring their clinical significance and providing practical guidance on integrating the findings into psychological evaluations and treatment plans.

### **Applications in Diverse Settings: Unlocking the Southern's Versatility**

The "Guide to the Theory, Administration, and Interpretation of the Southern" highlights the wide-ranging applications of the Southern Examination in various settings. It explores its utility in clinical practice for diagnosing mental health disorders, guiding treatment decisions, and evaluating therapeutic progress. The guide also delves into the Southern's role in human resources for assessing job candidates, promoting employee development, and optimizing organizational performance. Furthermore, it discusses its applications in forensic settings, such as evaluating criminal responsibility, assessing violence risk, and formulating treatment recommendations for incarcerated individuals.

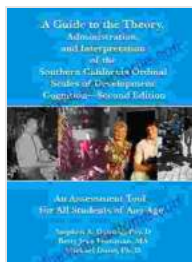
### **Benefits for Professionals and Students**

- Enhanced understanding of the Southern Examination's theoretical foundations

- Proficient administration and scoring techniques, ensuring accurate results
- Comprehensive interpretation guidance for unraveling the complexities of Southern profiles
- Practical applications in clinical, human resources, and forensic settings
- Valuable resource for both seasoned professionals and students seeking to specialize in psychological assessment

### **: Embarking on an Enlightening Journey**

The "Guide to the Theory, Administration, and Interpretation of the Southern" is an invaluable companion for professionals seeking to expand their expertise in psychological assessment. Its comprehensive coverage, practical guidance, and enlightening insights empower readers to harness the full potential of the Southern Examination and make informed decisions in their professional endeavors. Whether you are a seasoned clinician, a human resources professional, or a forensic evaluator, this guide will illuminate your path towards a deeper understanding of personality assessment and its indispensable role in various professional settings.



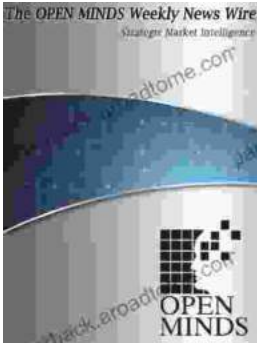
## **A Guide to the Theory, Administration and Interpretation of the Southern California Scales of Development Scales of Cognition Second Edition**

★★★★★ 5 out of 5

Language : English  
 File size : 26074 KB  
 Text-to-Speech : Enabled  
 Screen Reader : Supported  
 Enhanced typesetting : Enabled  
 Word Wise : Enabled  
 Print length : 148 pages

FREE

DOWNLOAD E-BOOK



## Wisconsin Clinic Pilots Mobile Crisis Response System For Consumers With Mental Health Conditions

MADISON, Wis. - A new mobile crisis response system is being piloted in Wisconsin to help consumers with mental health conditions. The system, which is being led by...



## Unleash Your Creativity: A Masterclass in Fabulous Nail Decorating Ideas

Embellish Your Fingertips with Captivating Designs and Techniques Get ready to elevate your nail art game to new heights with "Fabulous Nail Decorating Ideas," a...